

OPERATIC EDITION

# It Had To Be You

SONG

LYRIC BY  
GUS KAHN  
MUSIC BY  
ISHAM JONES

JEROME H. REMICK & CO  
NEW YORK ~ DETROIT

MADE  
IN  
U.S.A.

*Feslie  
Pilden*



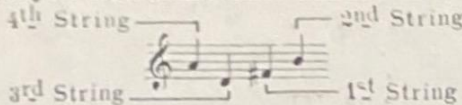
*Harry Hart  
and  
Irene Rubini*

# IT HAD TO BE YOU SONG

Lyric by  
GUS KAHN

If Played with Piano Tune Ukulele Like This

Music by  
ISHAM JONES



Moderato

PIANO

The first system of piano accompaniment consists of two staves. The right hand plays a rhythmic melody with eighth and sixteenth notes, while the left hand provides a harmonic accompaniment with chords and single notes. Dynamics include *f* and *mf*. A repeat sign is present at the end of the system.

VOICE

The first system of the vocal line includes a treble clef staff with lyrics and guitar chord diagrams above it. The piano accompaniment is shown in two staves below the vocal line. Dynamics include *p*.

Why do I do just as you say      Why must I just give you your way  
Seems like dreams like I al-ways had      Could be should be mak-ing me glad

The second system of the vocal line includes a treble clef staff with lyrics and guitar chord diagrams above it. The piano accompaniment is shown in two staves below the vocal line.

Why do I sigh      Why don't I try to for-get      It must have  
Why am I blue      It's up to you to ex-plain      I'm think-ing

Copyright MCMXXIV by JEROME H. REMICK & CO., New York & Detroit

Propiedad para la Republica Mexicana de Jerome H. Remick & Co., New York & Detroit. Depositada conforme a la ley

MADE IN U. S. A.

ALL RIGHTS RESERVED  
INCLUDING PUBLIC PERFORMANCE FOR PROFIT

International Copyright Secured

been that some-thing lov - ers call fate  
 may-be ba - by I'll go a - way

Kept on say - ing I had to wait  
 Some day some way you'll come and say

I saw them all -  
 "It's you I need"

Just could - n't fall - 'til we met  
 And you'll be plead - ing in vain

CHORUS

It had to be you  
 It had to be you

I wan-der'd a - round - And fin - al - ly found - The some - bod - y who -

Could make me be true could make me be blue.

And e-ven be glad. Just to be sad. Thinking of you.

Some oth-ers I've seen Might nev-er be mean.

Might nev-er be cross. Or try to be boss.

But they would - n't do \_\_\_\_\_ For no - bod - y else\_

Gave me a thrill\_ with all your faults\_ I love you still\_

It had to be you\_ Won - der - ful you\_ Had to be you\_

1. It had to be you\_ *D.S.*  
 2. *fz D.S.*

# THERE'S YES! YES! IN YOUR EYES

SONG

By CLIFF FRIEND

## CHORUS

Your lips tell me no! no! But there's

yes! yes! In your eyes I've been miss - in'

your kiss - in' Just be - cause I was - n't

wise I'll stop my schem - ing and dream - ing

634-3

Copyright MCMXXIV by JEROME H. REMICK & CO., New York & Detroit  
Propiedad para la Republica Mexicana de Jerome H. Remick & Co., New York & Detroit. Depositada conforme a la ley

MADE IN U.S.A.

ALL RIGHTS RESERVED  
INCLUDING PUBLIC PERFORMANCE FOR PROFIT

International Copyright Secured