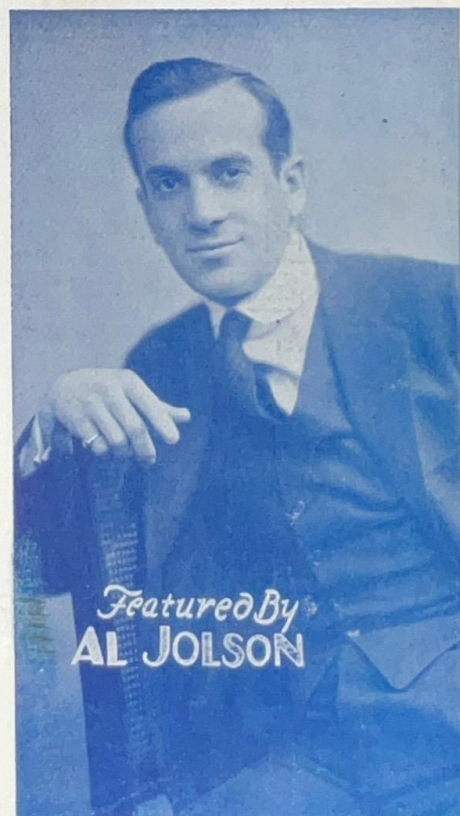
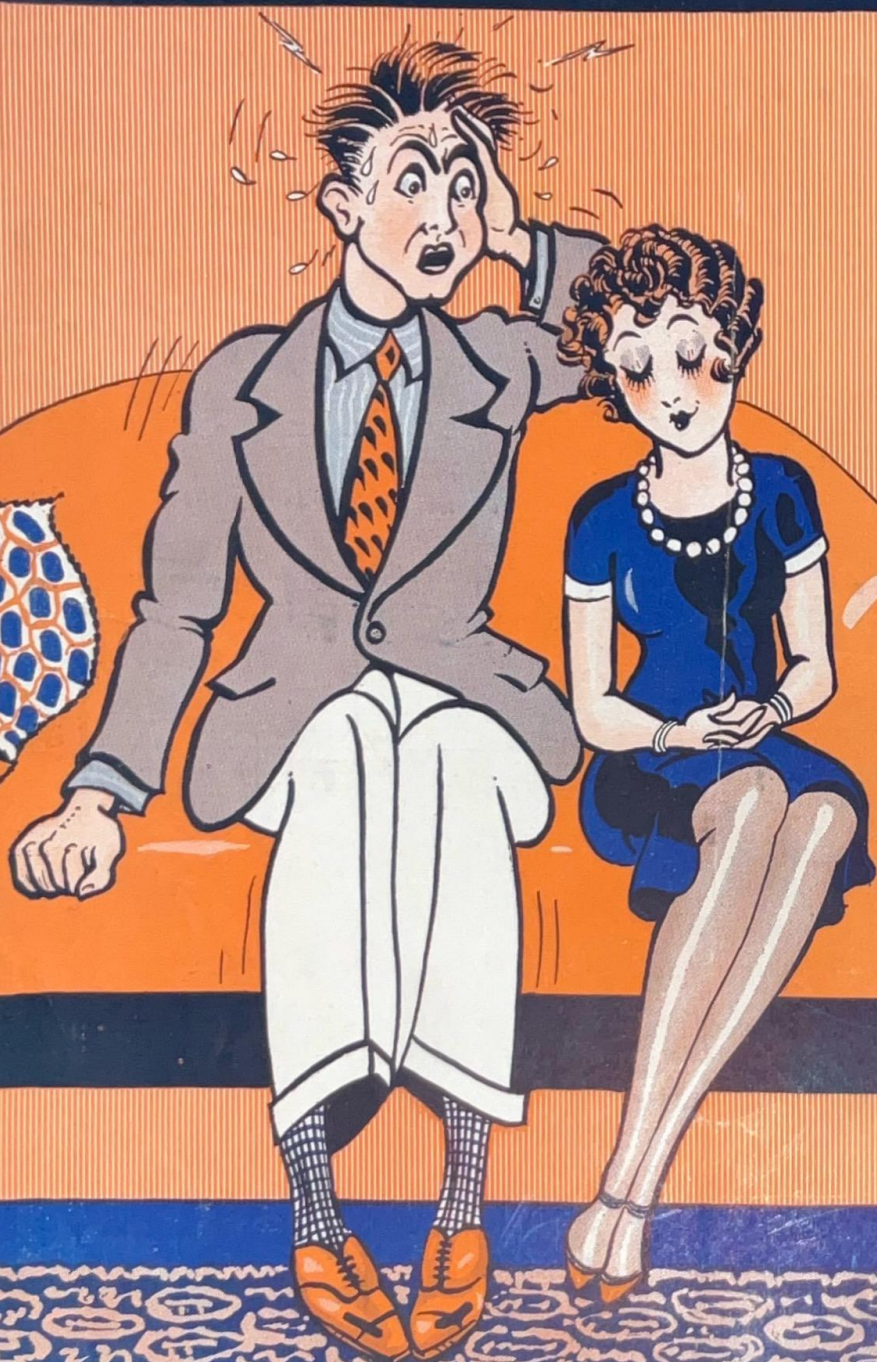


She Don't Wanna!

WORDS BY
JACK YELLEN
MUSIC BY
MILTON AGER

WITH
UKULELE
Arrangement

Handwritten signature



Featured By
AL JOLSON

AGER, YELLEN & BORNSTEIN INC.

MUSIC PUBLISHERS

745-7TH. AVE.

AYB

NEW YORK

Barbelle

MADE IN U.S.A.

She Don't Wanna

Tune Ukulele

A D F# B

Put Capo on 3rd fret

Words by
JACK YELLEN

Music by
MILTON AGER

Allegro moderato

First system of piano introduction. Treble clef, bass clef, 2/4 time signature. Starts with a forte (*f*) dynamic. The melody is in the treble clef, and the bass line is in the bass clef. The key signature has one flat (Bb).

Ukulele arrangement section. Treble clef, bass clef, 2/4 time signature. Includes a treble staff with rests and a ukulele staff with chords and triplets. Dynamics include *f* and *p*. A double bar line is present in the middle of the system.

Ukulele Arr. by MAY SINGHI BREEN

VOICE

Vocal and piano accompaniment section. Includes a vocal line with lyrics and a piano accompaniment. The piano part has a piano (*p*) dynamic. The key signature has one flat (Bb). The vocal line includes two guitar chord diagrams above it.

I'm a ner - vous wreck! What can you ex - pec'
I don't real - ly know Why she treats me so,

From a fel - low with a girl - ie who will nev - er neck?
 She looks hot - sie - tot - sie but she's just an Es - ki - mo.

She's a lit - tle queen, But she's ve - ry mean.
 Eats ex - pen - sive meals, Likes au - to - mo - biles;

Ev - 'ry eve - ning in her par - lor there's a bat - tle scene.
 But she's just a gal who has no use for sex ap - peals.

CHORUS

Oh, I want her to be — Nice and chum-my with me;
 Oh, if she want-ed to, — Gee, what we could-n't do!

p f

But she don't wan-na! — She don't wan-na!
 But she don't wan-na! — She don't wan-na!

I just want her to pet — Like the oth-ers I've met, —
 I've been gen-tle and mild, — But she's driv-ing me wild! —

But she don't wan-na! — She don't wan-na!
 'Cause she don't wan-na! — She don't wan-na!

Oh, I plead and beg for one lit - tle kiss — But that
All I want are hugs; Now ain't that a shame? — Say, if

hard - boiled egg, Just sits there like this. — We could
I go "bugs" You'll know who's to blame. — Gee, she

have so much fun, — But it takes more than one; — And she don't wan-na!
looks like she would, — And I cer-tain-ly could! — But she don't wan-na!

She don't wan-na, Oh, if wan-na!
She don't

f

3

3

BITS OF HITS

from the
Ager,
Yellen &
Bornstein
Catalog



If Not
Obtainable
Mail
35 Cents
in Stamps
for
a Copy
to Us



Ain't She Sweet?

Words by
JACK YELLEN

Tune Ukulele
or Banjulele Banjo
A D F# B
Put Capo on 1st fret

Music by
MILTON AGER,

CHORUS

Ain't she sweet? See her com-ing down the street! Now I
ask you ve-ry con-fi-den-tial-ly ain't she sweet? Ain't she

Copyright 1927 by AGER YELLEN & BORNSTEIN Inc. 745 7th Ave New York City
Performing Rights Reserved International Copyright Secured
Lawrence Wright Music Co London Eng

Forgive Me

Words by
JACK YELLEN
CHORUS

Tune Ukulele or
Banjulele Banjo
G C E A

Music by
MILTON AGER

For - givo me! — Please for - givo me! — I did -n't mean to
make you cry. — I love you — and I need you;

Copyright 1927 by AGER, YELLEN & BORNSTEIN, Inc. 745 Seventh Ave. New York City
Performing Rights Reserved International Copyright Secured
Lawrence Wright Music Co. London, Eng.

These
Songs
May Be
Obtained
for Your
Player
Piano
or
Talking
Machine



For Sale
Wherever
Music
Is Sold



AGER, YELLEN & BORNSTEIN INC.

MUSIC PUBLISHERS

745 SEVENTH AVI



NEW YORK