

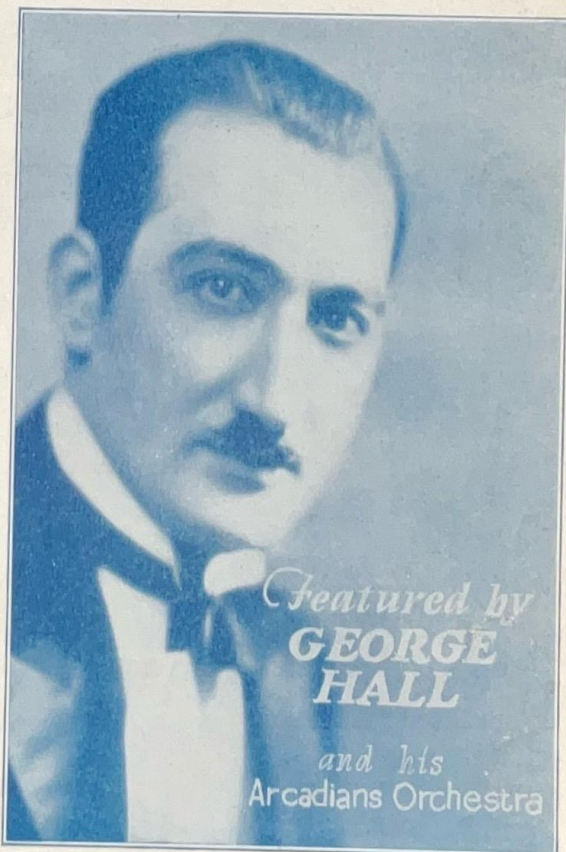
HONOLULU MOON

AN ALLURING WALTZ MELODY BALLAD

Words and
Music by
FRED LAWRENCE

With
Ukulele,
Accompaniment

You can't go wrong
with any FEIST' song!



Featured by
**GEORGE
HALL**

and his
Arcadians Orchestra

POPULAR EDITION
LEO. FEIST, INC. NEW YORK
CANADA, LEO. FEIST, LIMITED, 193 YONGE ST., TORONTO.
FRANCIS & HUNTER, LTD., 136-140 CHANCERY CROSS ROAD, LONDON, ENGL.

Donaldson's Distinctive and Charming Song!

"AT SUNDOWN"

(When Love Is Calling Me Home)

by WALTER DONALDSON

CHORUS

Ev'ry lit-tle breeze is sigh-ing of love un-dy-ing at Sun-down — Ev'ry lit-tle
bird is rest-ing and feath-er nest-ing at Sun-down — Each lit-tle rose-bud is
sleep-ing — While shad-ows are creep-ing — In a lit-tle
cot-tage coz-y The world seems ros-y at Sun-down — Where a lov-ing smile will greet me And al-ways meet me at

Copyright MCMXXVII by LEO FEIST, INC., Feist Building, New York.

Copies are for Sale at all Music Shops or Direct at 35¢ each

LEO FEIST Inc. 231 W. 40th ST. NEW YORK

CANADA - LEO FEIST LTD. 193 YONGE ST. TORONTO.

"YOU CAN'T GO WRONG WITH ANY 'FEIST' SONG"

Honolulu Moon

WALTZ-SONG

* Ukulele Arr. See Note Below

By FRED. LAWRENCE

Valse Moderato

mf

The piano introduction consists of two staves. The right hand plays a series of chords and eighth notes in a 3/4 time signature. The left hand provides a simple harmonic accompaniment with chords and eighth notes.

When day is slow - ly
When lit - tle stars are

p

The first vocal line is on a single staff. The piano accompaniment continues with two staves. The dynamics shift from *mf* to *p* (piano).

dy - ing, I am sigh - ing
blink - ing, I am think - ing

The second vocal line continues the melody. The piano accompaniment remains consistent with the previous section.

Then mem - 'ry comes a - haunt ing, And I'm
Think - ing of one place on - ly, And I'm

The final vocal line concludes the piece. The piano accompaniment ends with a final chord.

Copyright MCMXXVI by LEO. FEIST, Inc., Feist Building, New York
International Copyright Secured and Reserved

London - England: Francis, Day & Hunter, Limited, 138-140 Charing Cross Road
Toronto - Canada: Leo. Feist, Limited, 193 Yonge Street

* Ukulele Arr. by
MAY SINGHI BREEN
"The Ukulele Lady"
Tune Ukulele
G C E A

want - ing Hon - o - lu - lu Moon and you. _____
 lone - ly for the Hon - o - lu - lu Moon. _____

CHORUS

Hon - o - lu - lu Moon, now ver - y soon will come a - shin - ing

p-f

O'er the drow - sy blue la - goon; _____ All the balm - y

air; Breathes a per - fume rare; To be with you there my heart is

GOOD OLD TIMERS

A FOLIO CONTAINING 75 OF THE GOOD OLD SONGS AND CHORUSES WE ALL LOVE—SUCH AS "IN THE GOOD OLD SUMMERTIME"—"WHERE DID YOU GET THAT HAT?" "MANDY LEE"—"SIDEWALKS OF NEW YORK"—"COMRADES"—"LITTLE ANNIE ROONEY"—"SAY AU REVOIR, BUT NOT GOODBYE," ETC., ETC.
 A SONG FOLIO, A DANCE FOLIO, A UKULELE FOLIO, — ALL THREE IN THIS BIG BOOK FOR 50¢ FROM YOUR DEALER, OR DIRECT!
BE SURE TO GET IT—YOU'LL NOT REGRET IT!

pin - ing; — Side by side with you in our can - oe to go a -

glid - ing, While I sing a dream - y tune, (dream - y tune)

Ten - der words of love to you con - fid - ing; Un - der Hon - o -

lu - lu Moon. Moon.

5777 - 3

"Feist" Songs are also obtainable from your Dealer for your Talking Machine or Player Piano and for Band, Orch. etc.

"You Can't Go Wrong With These 'Feist' Songs"



SAM, THE OLD ACCORDION MAN

Words and Music by
WALTER DONALDSON

"You can't go wrong with any Feist song"

LEO FEIST, NEW YORK



Williams
KLEIN

Another "Donaldson" Novelty!
Sam, The Old Accordion Man

Words and Music by
WALTER DONALDSON

Chorus



He just plays chords, that make you feel grand, They call him
Sam, the old ac-cord-i-on man. His dream-y chords
Re-mind you of Heav'n And they're real chords, Ac-cord-ing to Dix-ie

Copyright MCMXXVII by Leo. Feist, Inc., Feist Building, New York

Words by
GUS KAHN
and **RAY EGAN**

Music by
WALTER DONALDSON

If You See Sally

Chorus



If you see Sal-ly tell her that you saw me— And when you saw me I was
blue, And if you hear sweet Sal-ly asking for me,— just tell her that
I was ask-ing for her too. If it seems to you that she still

Copyright MCMXXVII by Leo. Feist, Inc., Feist Building, New York


If You See Sally

A SENTIMENTAL FOX TROT BALLAD
With Ukulele Accompaniment

Words by
GUS KAHN
and **RAY EGAN**

Music by
WALTER DONALDSON

"You can't go wrong with any Feist song"



LEO FEIST, NEW YORK

OTHER "FEIST" SONGS YOU WILL ENJOY

- | | |
|---|---------------------------------|
| "RIO RITA" (from Ziegfeld's "Rio Rita") (40c) | "I'VE GOT THE GIRL" |
| "SUNDAY" | "IN A LITTLE SPANISH TOWN" |
| "TAKE IN THE SUN, HANG OUT THE MOON" | "HE'S THE LAST WORD" |
| "AT SUNDOWN" | "JUST A BIRD'S-EYE VIEW" |
| "HONOLULU MOON" | (of My Old Kentucky Home) |
| "COLLETTE" | "THINKING OF YOU" |
| "WISTFUL AND BLUE" | "IF I DIDN'T KNOW YOUR HUSBAND" |
| "IT MADE YOU HAPPY" | "PAL OF MY LONESOME HOURS" |

Get them for your Piano, Talking Machine and Player Piano
"Feist Songs" are on sale wherever music is sold or we will supply you direct.
Popular Songs 35c a copy (any 3 for \$1.00). Operatic Songs 40c a copy.

LEO, FEIST, Inc.

FEIST BLDG., 231 W. 40th St.

NEW YORK

CANADA: Leo Feist, Limited, 193 Yonge St., Toronto.

"You Can't Go Wrong With Any 'Feist' Song"