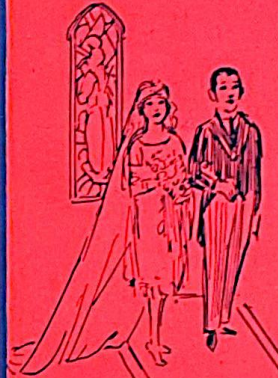
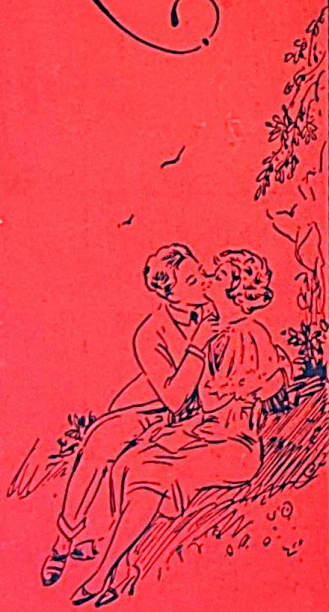
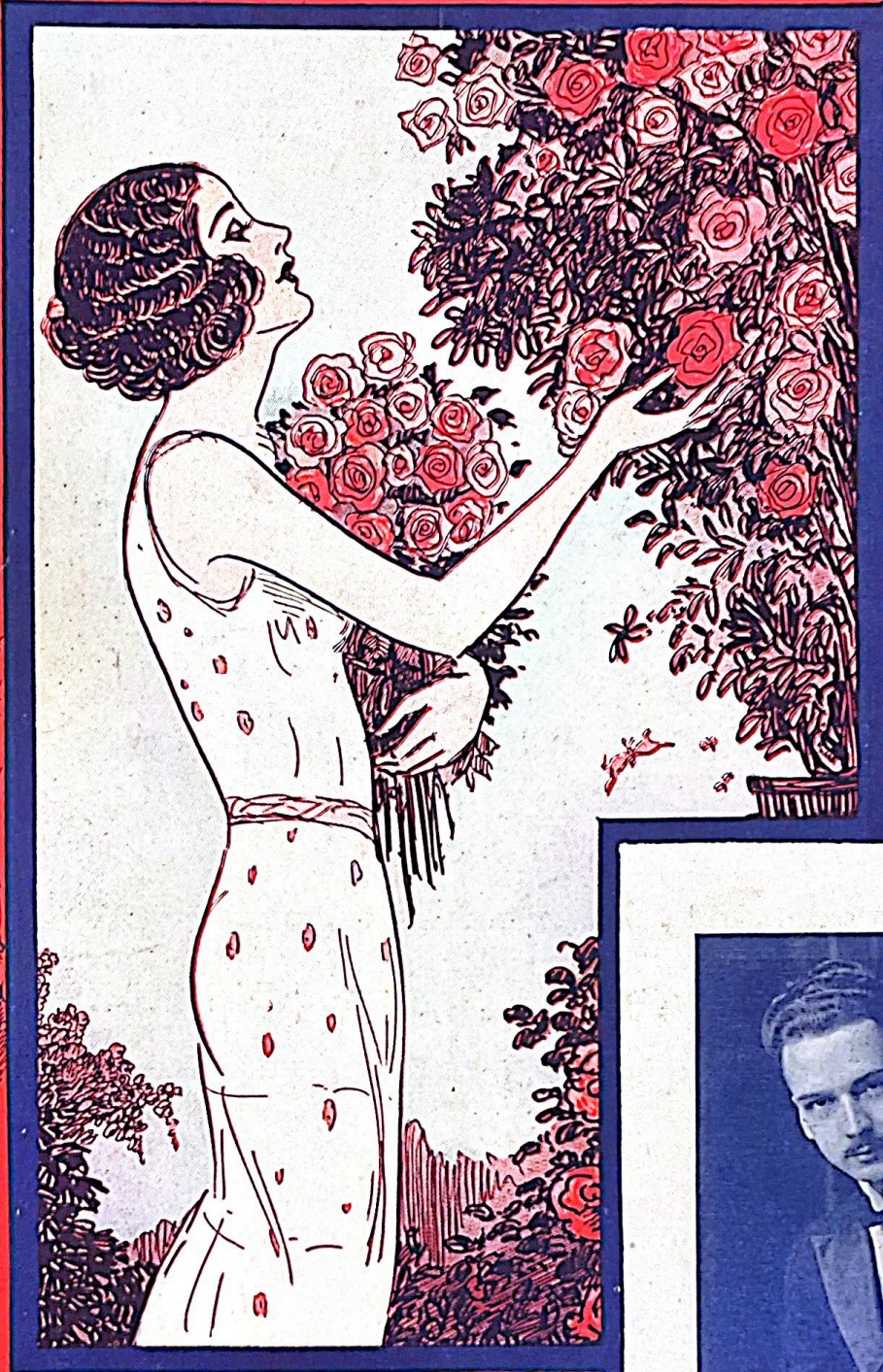


MARY LOU

WITH
UKULELE
ARRANGEMENT



By
**ABE
LYMAN
GEORGE
WAGGNER**
and
**J. RUSSEL
ROBINSON**



Barbelle



FEATURED BY
ELMER GROSSO AND HIS
VERSATILE ORCHESTRA

HENRY WATERSON INC.
1571 BROADWAY, NEW YORK, N.Y.
WATERSON, BERLIN & SNYDER CO.,
SELLING AGENTS

MADE
U.S.A.

BE SURE TO GET COPIES OF THESE BIG SONG HITS

Lonesome And Sorry

BENNY DAVIS
& CON CONRAD

Musical score for "Lonesome And Sorry" featuring a vocal line and piano accompaniment. The lyrics are: "Lone - some and sor - ry Be - cause you went a - way." The piano part includes a *p-f* dynamic marking.

Animal Crackers

By FRED RICH,
SAM COSLOW
& HARRY LINK

Musical score for "Animal Crackers" featuring a vocal line and piano accompaniment. The lyrics are: "I'm just wild - a - bout an - i - mal crackers, an - i - mal crackers, I can't live - with - out an - i - mal crackers,". The piano part includes a *p-f* dynamic marking.

Petrushka

By BILLY ROSE
& FRED FISHER

Musical score for "Petrushka" featuring a vocal line and piano accompaniment. The lyrics are: "Oh! Pe - trush - ka Oh! Pe - trush - ka Hear the boat - men call - ing me!" The piano part includes a *p-f* dynamic marking.

I'm Satisfied

Words by
ALFRED BRYAN

Music by
JACK LITTLE

Musical score for "I'm Satisfied" featuring a vocal line and piano accompaniment. The lyrics are: "I'm sat - is - fied to know I've tried I've done the best I can do." The piano part includes a *p-f* dynamic marking.

Tell Me To-Night

By PIERRE CONNOR
& JACK LITTLE

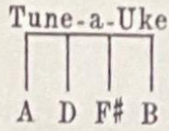
Musical score for "Tell Me To-Night" featuring a vocal line and piano accompaniment. The lyrics are: "Tell me to - night tell me to - night Do you real - ly love". The piano part includes a *p-f* dynamic marking.

The Above Numbers are Published and Copyrighted by Henry Waterson, Inc. 1571 Broadway, N. Y.
These Songs for sale at all Music Dealers or sent direct for 35¢ or any three for one dollar.

Also obtainable on all Phonograph Records and Music Rolls.

MARY LOU

Uke arr. by Harry Tiedeman



By ABE LYMAN,
GEORGE WAGNER &
J. RUSSEL ROBINSON

Moderato

Piano

Voice

I have some-thing on my mind that I've just got to say, Mar-y
There's a co-zy bung-a-low that's fixed for you and me, Mar-y

Lou, Mar-y Lou. Just the same old
Lou, Mar-y Lou. May-be in a

sto-ry in the same old fash-ioned way, Mar-y Lou, ——— List-en, do! ———
 year or so we'll make it do for three, Mar-y Lou, ——— List-en, do! ———

Chorus

Mar-y Lou, ——— Mar-y Lou, ——— Cross my heart ———

p-f

— I love you! ——— Ev-'ry bell in the steep-le is

read-y to ring, ——— And all the peo-ple are plan-ning pret-ty

pres-ents all for you, Mar-y Lou, Won't you

give your prom - ise true? Why for miles a - round they're

wait - ing, to start their cel - e - brat - ing, when you say "I do," Mar - y

Lou! Mar - y Lou!

D.S.

BE SURE TO GET COPIES OF THESE BIG SONG HITS

Words by
BILLY ROSE

To-Night You Belong To Me

Music by
LEE DAVID

Though you be-long to some-bod-y else, To - night you be-long to me. Though were a-

The musical score for 'To-Night You Belong To Me' features a vocal line and a piano accompaniment. The key signature has two flats (B-flat and E-flat), and the time signature is 3/4. The piano part begins with a dynamic marking of *p-f*.

Iyone My Own Iyone

By ALFRED BRYAN
ADDY BRITT &
HAROLD LEONARD

Iyone my own I-yone I'm lone-some for the love light of Ha - wa-ii.

The musical score for 'Iyone My Own Iyone' consists of a vocal line and a piano accompaniment. The key signature has two flats, and the time signature is 4/4. The piano part features a steady accompaniment with chords.

Words by
BILLY ROSE

That Night In Araby

Music by
TED SNYDER

I'm dream - ing of that night of love with you in Ar - a - by, I

The musical score for 'That Night In Araby' includes a vocal line and a piano accompaniment. The key signature has one flat (B-flat), and the time signature is 4/4. The piano part starts with a dynamic marking of *p-f*.

Words by
ALFRED BRYAN

Whisper-Sh!

Music by
LITTLE JACK LITTLE

Whis-per - shl — be care-ful, dear, — Whis-per - shl — some-one is near.

The musical score for 'Whisper-Sh!' features a vocal line and a piano accompaniment. The key signature has two flats, and the time signature is 4/4. The piano part begins with a dynamic marking of *p-f*.

Yiddisha Charleston

By BILLY ROSE
& FRED FISHER

Oi that oi that Yid-dish-a Charleston, Oi that oi that Yid-dish-a Charleston, You should see the
Oi that oi that Yid-dish-a Charleston, Oi that oi that Yid-dish-a Charleston, Watch those He - bie

The musical score for 'Yiddisha Charleston' consists of a vocal line and a piano accompaniment. The key signature has two flats, and the time signature is 4/4. The piano part starts with a dynamic marking of *p-f*.

The Above Numbers are Published and Copyrighted by Henry Waterson, Inc. 1571 Broadway, N.Y.

These Songs for sale at all Music Dealers or sent direct for 35¢ or any three for one dollar.

Also obtainable on all Phonograph Records and Music Rolls.