

Out



BRINGING UP FATHER



with
MARIE DRESSLER, POLLY MORAN and J. FARRELL MacDONALD
 A Jack Conway Production
 Continuity by Frances Marion
 Based on the newspaper cartoon feature
 by George McManus
 Owned and copyrighted by
 International Features Service, Inc.
A COSMOPOLITAN PRODUCTION
 Directed by Jack Conway
 Compiled by Ernst Luz
A METRO-GOLDWYN-MAYER PICTURE

Length of film 7 reels (6310 feet) Maximum projection time 1 hour, 15 minutes

- 1 AT SCREENING A Southern Reverie (Bendix) 2¼ Min.

And^{te}

Copyr. M. Witmark & Sons.

- 2 (Action) PHOTO STUDIO FADES TO PICTURE ON WALL Symphonic Incidentals No. 10 (Marquardt) (LT. BLUE) 1 Min.

Hurry Th

All^{te}

Copyr. 1927 Music Buyers Corp.

- 3 (Action) MILKMAN HIT ON HEAD Sunny Hours (Rich) 2 Min.

All^{te}

Copyr. 1927 Photo Play Music Co.

- 4 (Action) DOOR KNOCK Repeat No. 2 (LT. BLUE) 1 Min.

Hurry Th

All^{te}

- 5 (Action) FADE OF POLLY MORAN AT WINDOW Sweet Adeline 1 Min.

Fake Sweet Adeline

Mod^{to}

Copyr. M. Witmark & Sons.

- 6 (Title) WITH THAT SINGING Fresh Flowers (Lincke) 1¼ Min.

Valse lento

Copyr. Jos. Stern & Co.

NOTE: Play introduction and Waltz.

- 7 (Action) ARMLESS MAN AT BAR Romance sans Paroles (Davidoff) 3½ Min.

All^{te}

Copyr. 1922 G. Schirmer.

- 8 (Title) IS THIS THE SMALLEST YOU GOT Repeat No. 2 (LT. BLUE) ½ Min.

Hurry Th

All^{te}

9 (Title) PUT THIS IN THE CASH REGISTER Fragrance Lane (Fresco) 1 Min.

Musical notation for item 9: Treble clef, key signature of one sharp (F#), 2/4 time signature, tempo marking "Valse". Copyright 1925 Belwin Inc.

10 (Action) TELEPHONE BELL RINGS Repeat No. 2 (LT. BLUE) 1 1/4 Min.

Musical notation for item 10: Treble clef, key signature of one sharp (F#), 2/4 time signature, tempo marking "Allegro".

11 (Title) WAIT A MINUTE, MAGGIE Caressing Butterfly (Barthelemy) 2 Min.

Musical notation for item 11: Treble clef, key signature of one sharp (F#), 2/4 time signature, tempo marking "Allegro". Copyright 1911 G. Schirmer.

12 (Action) PLAY ONCE AND SEGUE Love's Wilfulness (Barthelemy) 2 Min.

Musical notation for item 12: Treble clef, key signature of one sharp (F#), 2/4 time signature, tempo marking "Andante appassionato", dynamic marking "mf". Copyright 1911 G. Schirmer.

13 (Action) JIGGS SITS DOWN IN ARM CHAIR La Confession (Morgan) 1 1/2 Min.

Musical notation for item 13: Treble clef, key signature of one sharp (F#), 2/4 time signature, tempo marking "Valse". Copyright 1916 E. B. Marks.

14 (Title) TELL PAPA WHAT HAPPENED Oh Mister (Frey) 3/4 Min.

Musical notation for item 14: Treble clef, key signature of one sharp (F#), 2/4 time signature, tempo marking "Allegro vivace". Copyright 1924 Rodgers Music Corp.

15 (Title) HERE COMES MY HONORED GUEST Call Me Sweetheart (Robe) (YELLOW) 1 Min.

Musical notation for item 15: Treble clef, key signature of one sharp (F#), 2/4 time signature, tempo marking "Moderato", dynamic marking "mf". Copyright 1927 G. Ricordi Co.

16 (Title) ALWAYS CALL ME DENNIS Punchinello (Herbert) 1 1/2 Min.

Musical notation for item 16: Treble clef, key signature of one sharp (F#), 2/4 time signature, tempo marking "Allegro". Copyright M. Witmark & Sons.

17 (Action) FATHER FILLING HIS PIPE Yestertoughts (Herbert) 3/4 Min.

Musical notation for item 17: Treble clef, key signature of one sharp (F#), 2/4 time signature, tempo marking "Lento". Copyright M. Witmark & Sons.

18 (Action) FATHER HURTS HIS FOOT Repeat No. 16 "Punchinello" 1 1/2 Min.

Musical notation for item 18: Treble clef, key signature of one sharp (F#), 2/4 time signature, tempo marking "Allegro".

19 (Title) MONEY'S GONE TO YOUR HEAD Repeat No. 2 (LT. BLUE) 1 Min.

Musical notation for item 19: Treble clef, key signature of one sharp (F#), 2/4 time signature, tempo marking "Allegro".

20 (Title) AUNTIE DEAR, IT'S HELEN Only a Smile (Zamecnik) (WHITE) 3/4 Min.

Musical notation for item 20: Treble clef, key signature of one sharp (F#), 2/4 time signature, tempo marking "Andante". Copyright 1931 Sam Fox Co.

21 (Action) DOG'S TAIL CAUGHT IN RAT TRAP Repeat No. 2 (LT. BLUE) 1/2 Min.

Musical notation for item 21: Treble clef, key signature of one sharp (F#), 2/4 time signature, tempo marking "Allegro".

22 (Title) SOME OF MAGGIE'S FURNITURE Butterflies (Arundale) 2 1/2 Min.

Musical notation for item 22: Treble clef, key signature of one sharp (F#), 2/4 time signature, tempo marking "Allegro". Copyright 1919 J. B. Cramer Co.

Handwritten circled text: "Henry Tom"

Handwritten circled text: "Henry Tom"

Handwritten circled text: "LT"

Handwritten circled text: "Henry Tom"

23 (Title) YES, BUT I LIKE MY MAH IONGG How-Wah-Ya (Banta) 1/4 Min.

Handwritten: *One Step*
Musical notation for item 23. Copyright: 1924 Robbins Music Corp.

24 (Action) STREET SCENE Repeat No. 2 (LT. BLUE) 1/2 Min.

Handwritten: *Harry Tr*
Musical notation for item 24.

25 (Action) JIGGS THROWS ROLLING PIN MANUFACTURER INTO COAL HOLE Chiffons and Laces (Baron) 3/4 Min.

Handwritten: *To diminish*
Musical notation for item 25. Copyright: 1926 Belwin Inc.

26 (Action) MAN BEGINS TO PLAY PIANO In a Little Spanish Town (Wayne) (Piano and Voice) 3/4 Min.

Handwritten: *Folio*, *In a Little Spanish Town*, *Modto*
Musical notation for item 26. Copyright: 1926 Leo Feist.

27 (Action) JIGGS ENTERS—END OF SONG The Tragic Discovery (Patou) 1 Min.

Handwritten: *Fritto*
Musical notation for item 27. Copyright: 1924 Hawkes & Son.

28 (Title) WILL YOU DEPRIVE YOURSELVES Repeat No. 2 (LT. BLUE) 1 Min.

Handwritten: *Harry Tr*
Musical notation for item 28.

29 (Action) POLLY MORAN KICKED The Awakening (Zamecnik) 1 1/2 Min.

Handwritten: *Appassionato*
Musical notation for item 29. Copyright: 1924 Sam Fox.

30 (Action) HALL AND STAIRWAY SCENE Repeat No. 15 (YELLOW) 1 Min.

Handwritten: *Modto*
Musical notation for item 30.

31 (Action) GIRL GOES BACK INTO HOME Andante Pathetique No. 10 (Berge) 1 Min.

Handwritten: *Fritto sost.*
Musical notation for item 31. Copyright: 1916 S.M. Berg.

32 (Title) SO JIGGS LOOKED OVER LONG ISLAND Dainty Blossoms (Kahn) 2 Min.

Handwritten: *Fritto Modto*
Musical notation for item 32. Copyright: 1925 Feature Music Co.

33 (Title) THE BLACKBIRD CAFE Let a Smile Be Your Umbrella (Fain) 1 Min.

Handwritten: *Folio*, *Let a Smile Be your Umbrella*, *Modto*
Musical notation for item 33. Copyright: 1927 Waterson, Berlin & Snyder.

34 (Title) I MIGHT AS WELL Diane (Rapee) 3/4 Min.

Handwritten: *Folio*, *Quaise*, *Modto*
Musical notation for item 34. Copyright: 1927 Sherman Claya Co.

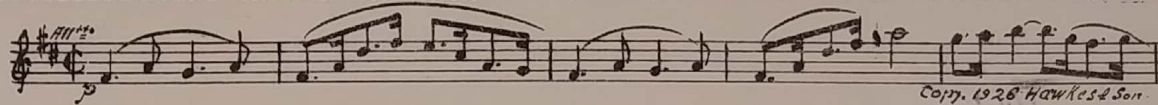
35 (Action) JIGGS HIT OVER HEAD WITH ROLLING PIN A Shepherd's Pipe and Summer Skies (Falk) 2 1/4 Min.

Handwritten: *Fritto*
Musical notation for item 35. Copyright: 1924 Ludwig Music Co.

36 (Action) WIFE OPENS DOOR OF BEDROOM Melody (Franck) 3/4 Min.

Handwritten: *Andto*
Musical notation for item 36. Copyright: 1927 Emil Ascher.

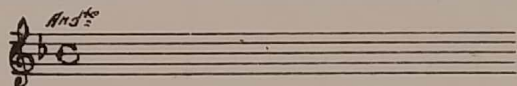
37 (Title) THE BIGGEST EVENT Pastime (Clutsam) 1¼ Min.



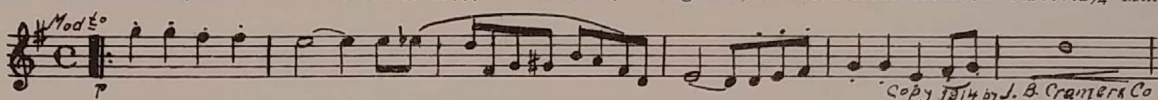
Copy 1926 Hawkes & Son

38 (Title) I WAS GIVING A LITTLE SURPRISE PARTY Repeat No. 20 (WHITE) 1¼ Min

LT

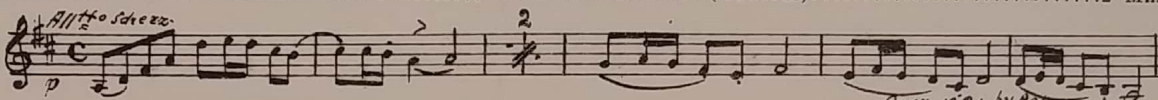


39 (Title) THAT EVENING MAGGIE Slumberland (Herringshaw) 2¼ Min.



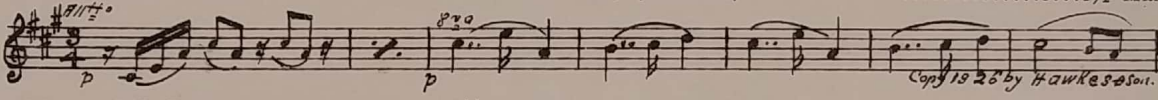
Copy 1914 by J. B. Cramer & Co

40 (Action) DENNIS WALKS TO GIRL AT CAKE Rendez-vous d'Amour (Edwards) 2 Min.



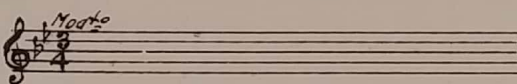
Copy 1921 by Belwin

41 (Action) WIFE WALKS TO JIGGS AT CHAIR Love's Lullaby (Vermeire) 1½ Min.



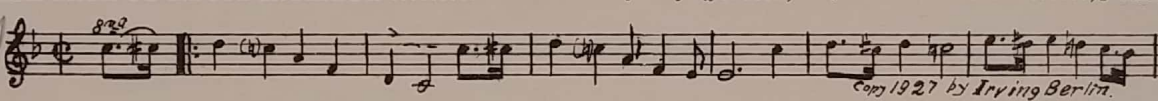
Copy 1926 by Hawkes & Son

42 (Action) JIGGS HAS PEN—BEGINS TO WRITE Repeat No. 15 (YELLOW) 1 Min.



43 (Action) FLASH-BACK TO HOUSE INTERIOR Dew-Dew-Dewy Day (Johnson) ½ Min.

Fairy Dance
Sweet Day



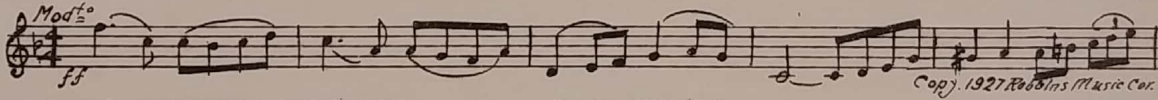
Copy 1927 by Irving Berlin

44 (Title) ARE YOU TRYING Repeat No. 2 (LT. BLUE) 1 Min.

45 (Action) MAGGIE PREVENTS JIGGS SHOOTING HIMSELF Repeat No. 20 (WHITE) ¾ Min.

46 (Action) LETTER TO MRS. JIGGS Repeat No. 2 (LT. BLUE) 1 Min.

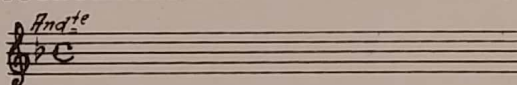
47 (Title) OH MAGGIE, MAGGIE Joyous Appassionato (Carbonara) 1½ Min.



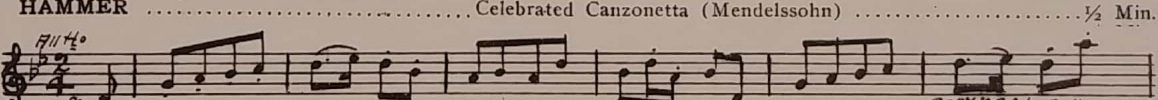
Copy 1927 Robbins Music Co.

48 (Title) IF YOUR PRAYERS WERE ANSWERED Repeat No. 20 (WHITE) ½ Min.

LT



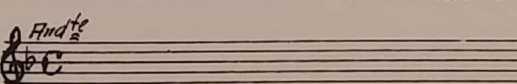
49 (Action) SEQUE QUICK AS JIGGS IS HIT WITH HAMMER Celebrated Canzonetta (Mendelssohn) ½ Min.



copy 1926 by 4 Shireck

50 (Action) FADE TO BED IN HOSPITAL Repeat No. 20 (WHITE) ½ Min.

LT



THE END

Proper orchestral rest period is Nos. 20 to 32 inclusive.

NOTE: The repetition of numbers in this cue sheet is simplified by the use of the "LUZ" SYMPHONIC COLOR GUIDE, sold by Music Buyers Corporation, 1520 Broadway, New York City. The color suggested for repetition of numbers designates the Mood or Emotion, and is used as a code for such repetitions.

Country of Origin, U. S. A.

Complete orchestrations and single piano parts of each separate number contained hereon, can be purchased from CAMEO MUSIC SERVICE CORPORATION, 315-317 WEST 47TH STREET, NEW YORK CITY.